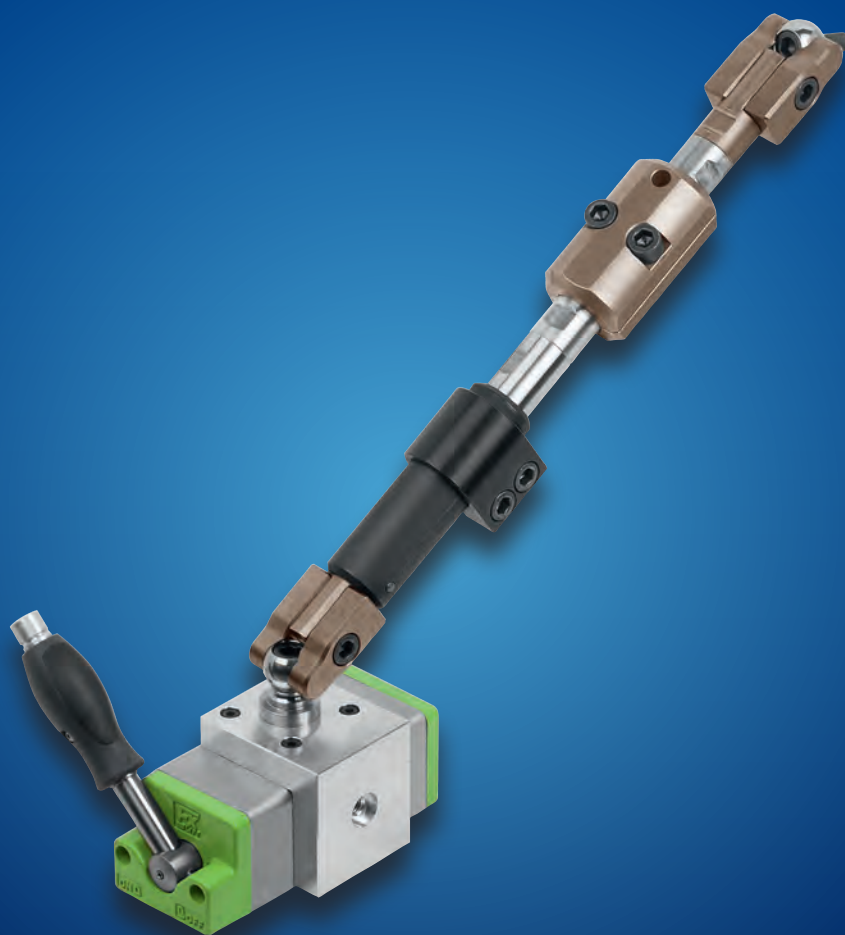




HEINRICH KIPP WERK



# WORKPIECE stabiliser

Edition 08 2018



# CONTENTS



+49 7454 793-7652



+49 7454 793-7983



spanntechnik@kipp.com



www.kipp.com

---

## WORKPIECE STABILISER

Product overview	5
Technical Information	6-7

---

## APPLICATION EXAMPLE

for workpiece stabiliser	8
--------------------------	---

---

## PRODUCTS

Workpiece stabiliser set with case	9
Workpiece stabiliser	10
Extension shafts for workpiece stabiliser	10
Fine adjustment for workpiece stabiliser	11
Magnet for workpiece stabiliser	11
Fastening set for T-slot tables	12
Fastening set for workpiece stabiliser	12
Fastening set with clamping ball	
for workpiece stabiliser	13
Claw clamp for workpiece stabiliser	13
Clamping balls with cup	
for workpiece stabiliser	14



Reg. Nr. 002081 QM



## SERVICE HOURS (CET)

MONDAY-THURSDAY	07.00 - 17.30
FRIDAY	07.00 - 15.30

# KIPP stabiliser



- Rigidity and vibration reduction during machining
- Cleverly designed system elements for rapid assembly
- 3D ball joint for optimum adaption to workpiece
- Various methods of fastening to workpiece and machine table
- Universal compatibility to T-slot machine tables, grid systems and **UNI** lock zero-point clamping systems
- Fine adjustment enables adjustment in both directions
- Different extension shafts for flexible length setups

Flexibility by connecting to workpiece, machine table and base elements:





Workpiece stabiliser



Workpiece stabiliser set  
with case  
**K1296**



Page 11

Workpiece stabiliser  
**K1170**



Page 12

Extension shafts  
for workpiece stabiliser  
**K1186**



Page 12

Fine adjustment  
for workpiece stabiliser  
**K1187**



Page 13

Magnet  
for workpiece stabiliser  
**K1188**



Page 13

Fastening set  
for T-slot tables  
**K1189**



Page 14

Fastening set  
workpiece stabiliser  
**K1190**



Page 14

Fastening set with clamping ball  
for workpiece stabiliser  
**K1191**



Page 15

Claw clamp  
for workpiece stabiliser  
**K1192**



Page 15

Clamping balls with cup  
for workpiece stabiliser  
**K1193**



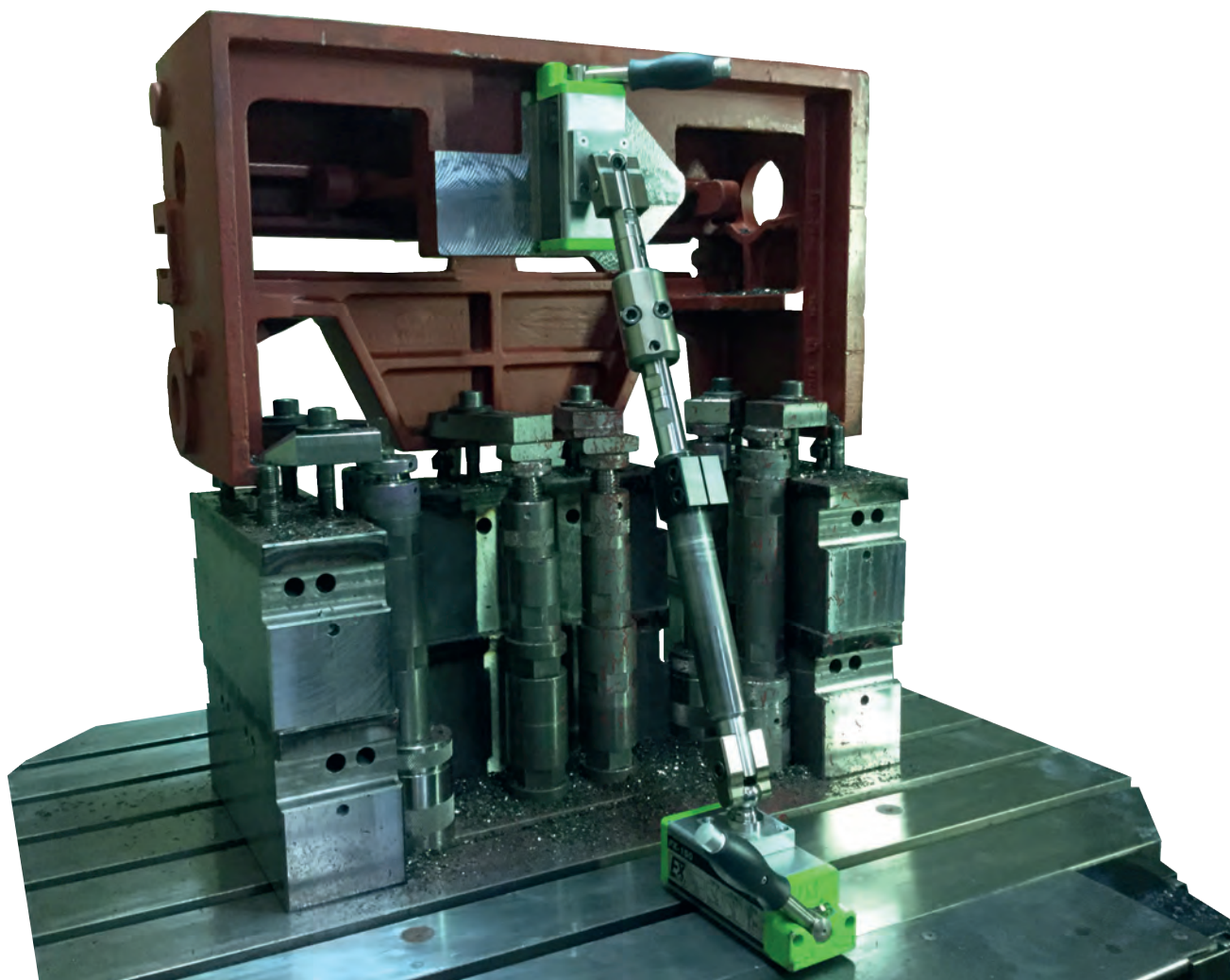
Page 16

# Technical information for workpiece stabiliser



The workpiece stabiliser has been developed specifically for minimising vibrations and oscillations when machining sensitive and thin-walled workpieces.

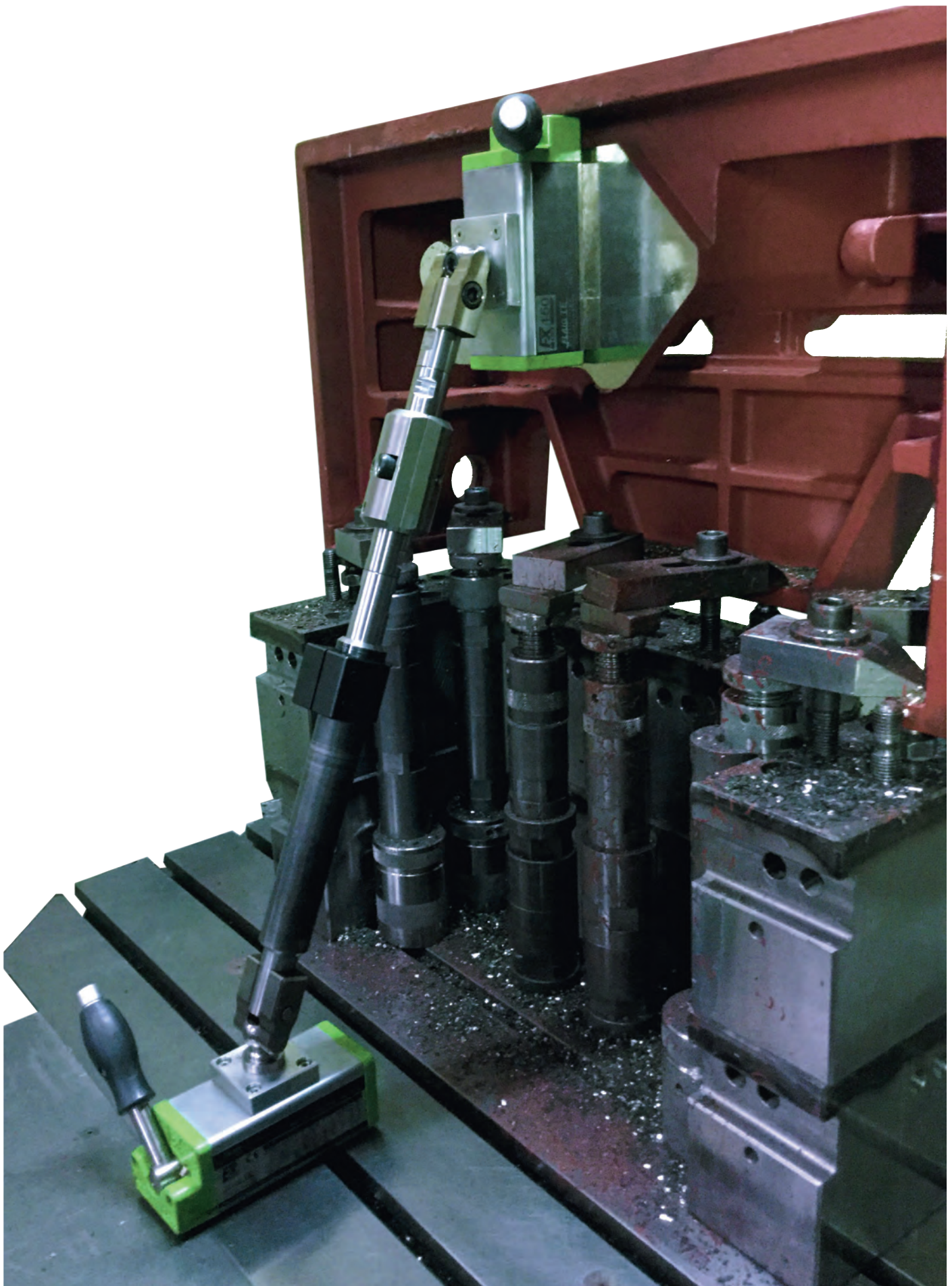
This system is extremely flexible thanks to its different methods of fixing to the workpiece and the machine table.







- 1 Fastening set for T-slots
- 2 Magnet
- 3 Fastening set for zero point interface
- 4 Workpiece stabiliser
- 5 Fine adjustment
- 6 Clamp strap
- 7 Clamping ball with cup





# Workpiece stabiliser set

with case


**Material:**

Case plastic.

See corresponding product group for contents.

**Version:**

black.

**Sample order:**

K1296.925

**Note:**

Objects sized between 355 and 980 mm can be set up using this stabiliser set.

It is basic equipment for supporting workpieces.

The individual parts are safely stored in a plastic case.

The length of the workpiece stabiliser is infinitely adjustable.

With the locking mechanism, the shaft can be securely locked against tension and compression.

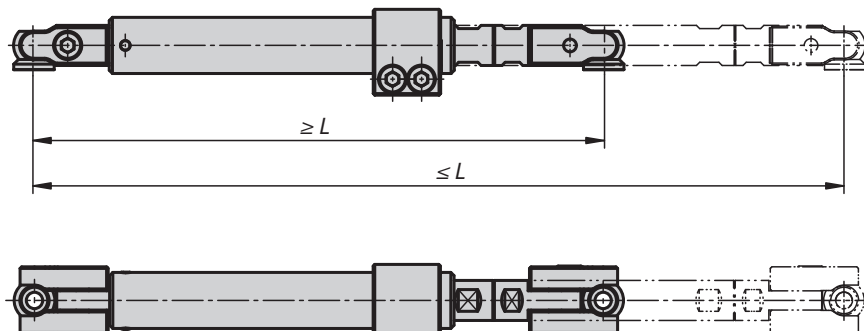
**Supplied with:**

- Case
- Workpiece stabiliser, K1170.355505
- Extension shaft L75, K1186.1625075
- Extension shaft L100, K1186.1625100
- Extension shaft L150, K1186.1625150
- Precision adjustment, K1187.25120150
- Fastening set for T-slots, 14 mm T-slot set, K1189.2514
- 18 mm T-slot block with M10, K0378.18.005
- 22 mm T-slot block with M10, K0378.22.005
- Clamping ball with cup M12, K1193.3251240
- Clamping ball with cup M16, K1193.3251640

**KIPP Workpiece stabiliser set with case**

Order No.	Description	Version
K1296.925	Workpiece stabiliser set	with case

## Workpiece stabiliser



**Material:**  
Steel.

**Version:**  
Black oxidised.

**Sample order:**  
K1170.255305

**Note:**  
The length of the stabiliser is infinitely adjustable. With the locking mechanism, the shaft can be securely locked against tension and compression.  
Supplied with 2 fastening sets and clamping ball with seating cup.

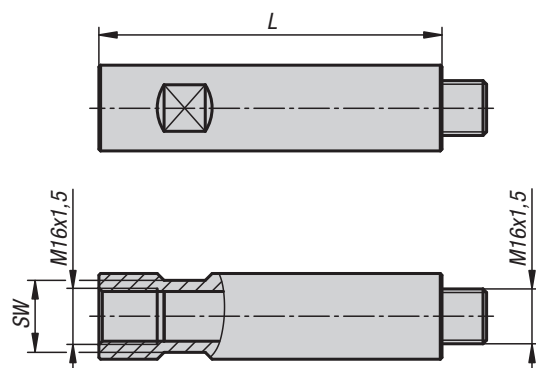
### KIPP Workpiece stabiliser

Order No.	L min.	L max.	weight kg
K1170.255305	255	305	1.9
K1170.355505	355	505	2.5

# K1186

## Extension shafts

for workpiece stabiliser



**Material:**  
Steel.

**Sample order:**  
K1186.1625075

**Note:**  
The extension shafts extend the adjustment range.  
They are mounted with the clamping ball between the workpiece stabiliser and the fastening set.

### KIPP Extension shafts for workpiece stabiliser

Order No.	L	SW	weight kg
K1186.1625075	75	21	0.233
K1186.1625100	100	21	0.293
K1186.1625150	150	21	0.416
K1186.1625250	250	21	0.697
K1186.1625500	500	21	1.9

## Fine adjustment

for workpiece stabiliser



**Material:**

Steel.

**Sample order:**

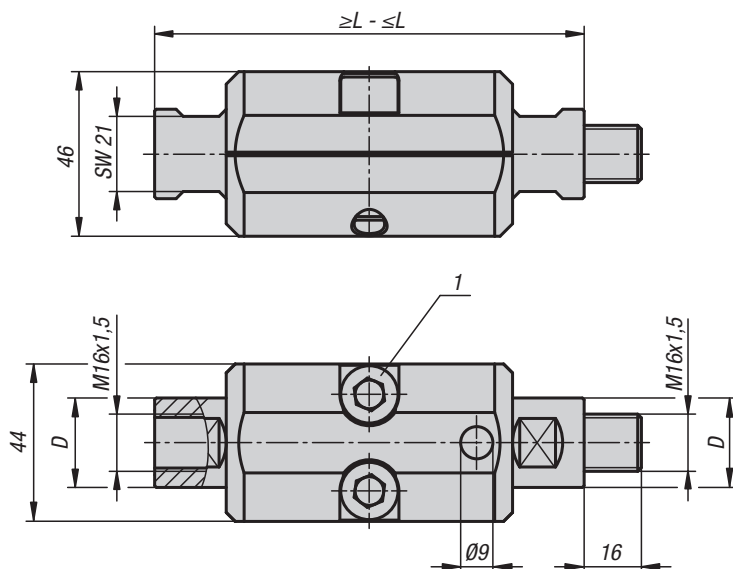
K1187.25120150

**Note:**

The fine adjuster enables the distance between the workpiece and the support surface to be precisely set. If required, the adjuster can be used to set the stabiliser under tensile or compressive load.

**Drawing reference:**

1) DIN EN ISO 4762 M10 cap screw



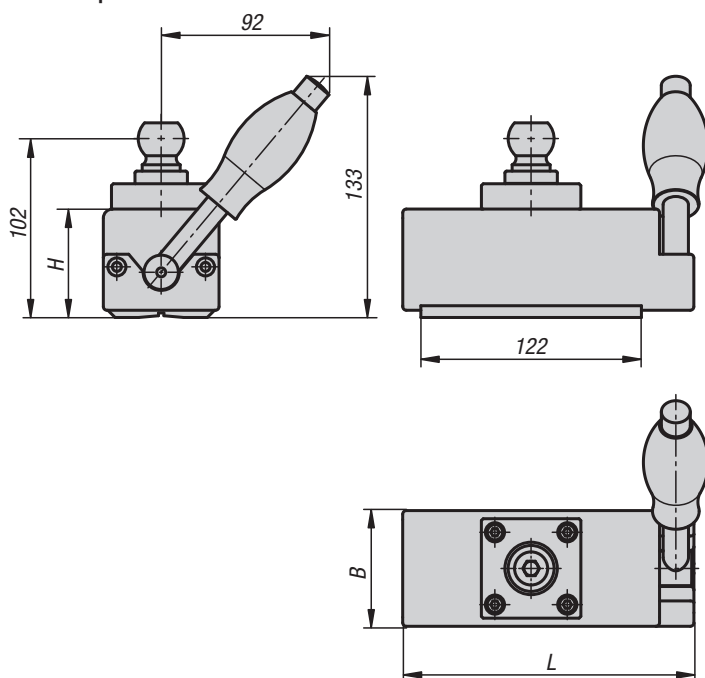
### KIPP Fine adjustment for workpiece stabiliser

Order No.	D	L min.	L max.
K1187.25120150	25	120	150

# K1188

## Magnet

for workpiece stabiliser



**Sample order:**

K1188.25161064

**Note:**

The magnet is connected to the workpiece stabiliser. The magnet can be positioned anywhere enabling flexible placement on the machine table.

**Attention:**

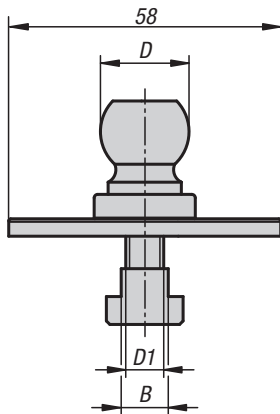
- Retaining force 1470N.
- Max. retention from 8mm depending on material thickness.
- No lifting apparatus.

### KIPP Magnet for workpiece stabiliser

Order No.	B	H	L	Magnetic force N	weight kg
K1188.25161064	64	60	161	1470	3.73

## Fastening set

for T-slot tables



**Material:**  
Steel.

**Sample order:**  
K1189.2512

**Note:**  
These fastening sets are for adapting to machine tables with T-slots.

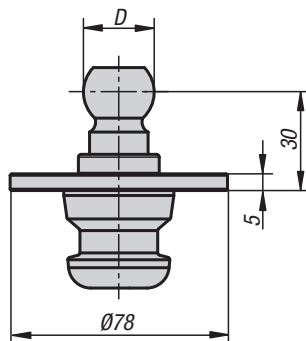
### KIPP Fastening set for T-slot tables

Order No.	Version	B	D1	D
K1189.2512	for T-slot	12	M10	25,4
K1189.2514	for T-slot	14	M10	25,4
K1189.2518	for T-slot	18	M10	25,4
K1189.2520	for T-slot	20	M10	25,4
K1189.2522	for T-slot	22	M10	25,4
K1189.2524	for T-slot	24	M10	25,4

# K1190

## Fastening set

workpiece stabiliser



**Material:**  
Steel.

**Sample order:**  
K1190.2540

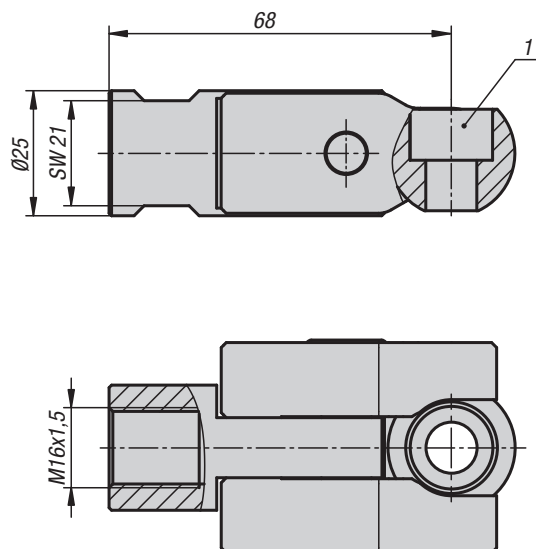
**Note:**  
The fastening set is suitable for adaption to UNI lock clamping systems.

### KIPP Fastening set for workpiece stabiliser

Order No.	D
K1190.2540	25,4

## Fastening set with clamping ball

for workpiece stabiliser



**Material:**  
Steel.

**Sample order:**  
K1191.2525

**Note:**  
This fastening set is used to connect the stabiliser to the workpiece. It is supplied with ball and seating cup.

**Drawing reference:**  
1) for DIN 912 M10 cap screw

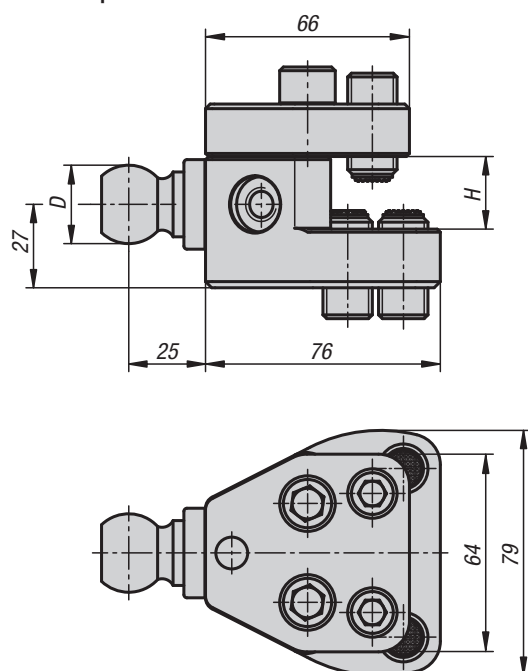
### KIPP Fastening set with clamping ball for workpiece stabiliser

Order No.	Dimensions
K1191.2525	see drawing

# K1192

## Claw clamp

for workpiece stabiliser



**Material:**  
Steel.

**Sample order:**  
K1192.258076

**Note:**  
This claw clamp is used to connect the stabiliser to the workpiece. The clamping ball can be attached to several faces of the claw clamp enabling flexible adjustment.

### KIPP Clamp strap for workpiece stabiliser

Order No.	D	H clamping range
K1192.258076	25,4	0-45



## Clamping balls with cup

for workpiece stabiliser



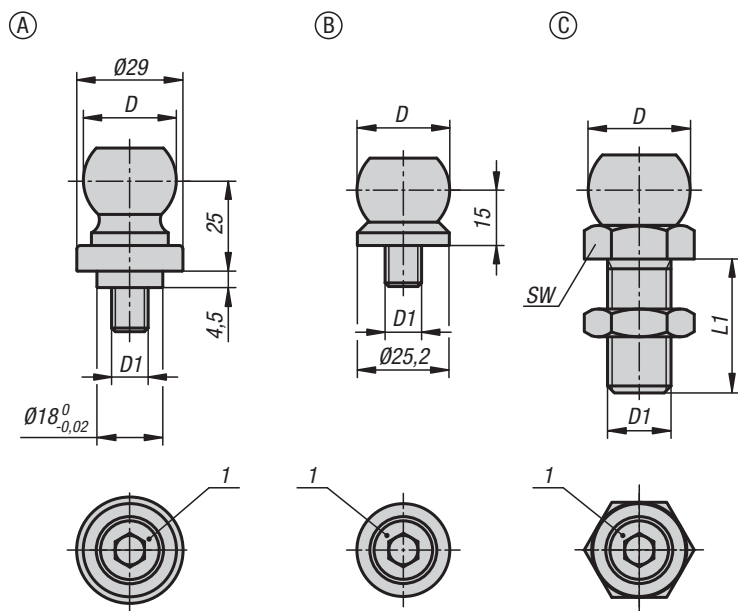
**Material:**  
Steel.

**Version:**  
DIN EN ISO 4017 hex head bolt , grade 8.8, black.  
DIN EN ISO 4762 cap screws, grade 8.8, black.  
Ball, bright.

**Sample order:**  
K1193.125

**Note:**  
The clamping balls with cup enable flexible connections between the workpiece and the workpiece stabiliser. The clamping balls provide a high degree of freedom on the workpiece.

**Drawing reference:**  
1) DIN EN ISO 4762 M10 cap screw



### KIPP Clamping balls with cup for workpiece stabiliser

Order No.	Form	D	D1	L1	SW
K1193.125	A	25,4	M10	-	-
K1193.225	B	25,4	M10	-	-
K1193.3251240	C	25,4	M12	40	19
K1193.3251640	C	25,4	M16	40	24
K1193.3252050	C	25,4	M20	50	30
K1193.3252450	C	25,4	M24	50	36

The standard terms and conditions of sale, delivery and payment that you can find on our website **[www.kipp.com](http://www.kipp.com)** apply.

**HEINRICH KIPP WERK KG**  
Heubergstraße 2  
72172 Sulz am Neckar  
GERMANY

Tel.: +49 7454 793-0  
Fax: +49 7454 793-33  
E-Mail: [verkauf@kipp.com](mailto:verkauf@kipp.com)  
[technik@kipp.com](mailto:technik@kipp.com)  
Internet: [www.kipp.com](http://www.kipp.com)

**HEINRICH KIPP WERK KG**

Heubergstraße 2

72172 Sulz am Neckar

GERMANY

Tel. +49 7454 793-0

Fax +49 7454 793-7982

[info@kipp.com](mailto:info@kipp.com)

[www.kipp.com](http://www.kipp.com)



WE01ENCAT1808